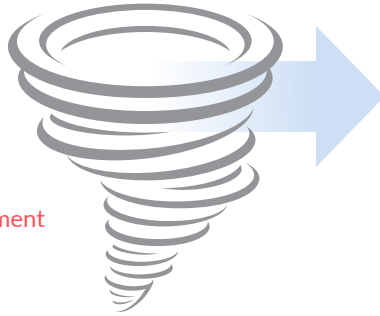


OhioRISE is a new initiative in Ohio designed to help young people with significant behavioral health issues succeed in their schools, homes, and communities.

If your child's behavioral health challenges are making life feel unmanageable...

OhioRISE is designed to help young people who have multiple needs that result from behavioral health challenges or who are at risk of out-of-home placement or deeper system involvement as the result of issues such as:

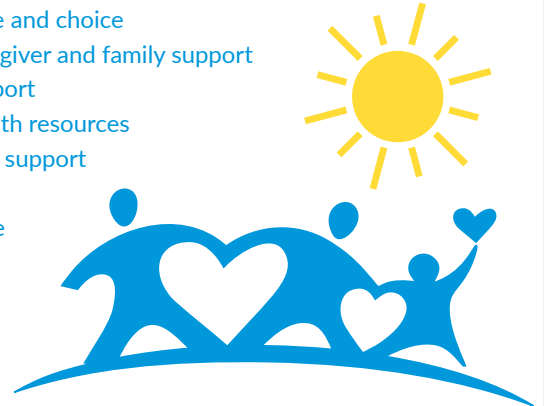
- Mental health issues
- Substance abuse
- Autism or other developmental disabilities
- Juvenile court involvement
- Child protective services involvement
- Difficulty with peer and/or family relationships
- Problems at school



And you need help creating a care plan that helps build long-term success for your child and family...

OhioRISE care coordination uses services and supports that wrap around your family to make life feel manageable again such as:

- Family voice and choice
- Parent/caregiver and family support
- School support
- Mental health resources
- Community support
- Linkages
- Respite care
- Advocacy



OhioRISE Care Coordination

What to Expect



Designs an individualized **care plan** that builds on the family's strengths, needs, culture, and vision.



Builds a **care team** that prioritizes youth and family voice and choice, using a wraparound approach.



Provides **in-home and community** resources, using all available natural community supports.



Regular communication with your care coordinator.



Ongoing review of what is working, what is not, and what to try next.



Linkages to other services, supports, and activities.

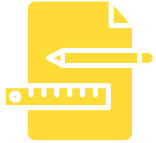


24/7 crisis support.

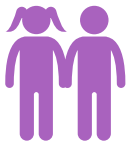


A partner to join you in advocating for your child in meetings such as those at school, juvenile court, mental health providers, etc.

Who qualifies for OhioRISE?



Young people who require significant behavioral health treatment, as measured by the **Child and Adolescent Needs and Strengths Assessment (CANS)**.



Children and youth ages **0 – 20**.



Young people who are **eligible for Medicaid**, either managed care or fee for-service.



Children and youth may also be eligible because of **certain urgent conditions**, for example, if a child or youth is in a hospital for behavioral health reasons or is admitted to a psychiatric residential treatment facility.

About OhioRISE

- **OhioRISE** is a Medicaid managed care program that offers specialized behavioral healthcare for youth from Aetna Better Health of Ohio.
- **OhioRISE** brings together local entities, schools, providers, health plans, and families to improve care for children.
- **OhioRISE** provides care coordination through **Care Management Entities (CME) like PEP** for youth who have behavioral health conditions and are involved with systems like child protection and juvenile justice.

About PEP

- **PEP** is the **OhioRISE CME** for central Cuyahoga County.
- **PEP** provides care coordination through its **PEP Connections** program, which has delivered a similar service to young people and families in Northeast Ohio for over 30 years.
- Since 1971, **PEP** has been supporting young people to overcome and thrive. In addition to PEP Connections, PEP's programs include five Day Treatment Centers (Chesnutt, Hopewell, Phoenix, Prentiss Autism Center, Willow Creek) PEP Early Childhood Plus, and PEP Assist.

Next steps



PEP can help with questions and next steps including determining if your child is eligible. Contact us at **216-361-2441** or at pephiorise@pepcleve.org



You can also contact **Aetna Better Health of Ohio** directly at **1-833-711-0773 (TTY: 711)**